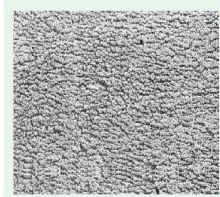
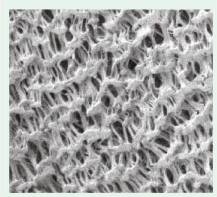


板状膨体聚四氟乙烯密封垫片 Expanded PTFE Sheet & Gasket

等向性软性纤维化聚四氟乙烯密封垫片是由100%PTFE经过特殊制程研制而成。系由无数均质细密柔软强韧之多向纤维组成，有高抗拉强度，低蠕变，耐低温，耐腐蚀，不含石棉及其他添加物，无毒性，符合FDA要求，抗老化。受压后纤维相互缠结，变成组织更紧密均匀，不透气、不透水、止泄性能好，在严苛之腐蚀性环境及高温下，亦能保持极佳之密封状态。

Soft Fibration PTFE Sealing Gasket is made from 100% PTFE through unique process. It is made up of countless homogeneous, fine, soft, multidirectional fibers. It has high tensile strength, low creep, high and low temperature resistance, corrosion resistance, no asbestos, no additives, non-toxic, comply with FDA requirements, and aging resistance. After compression, fiber tangles mutually, and becomes more closer, airtight, watertight, and better performance of anti leakage, under severe corrosive environment and high temperature, it can still maintain excellent sealing.



压缩前 Before Compression

压缩后 After Compression

I、用途 Applications

适用于各式法兰，在化学工业，食品工业，制药工业，半导体工业，航天工业，石化工业，纸浆造纸工业，造船工业，医疗器材工业等均可使用。

It is used as sealing material for various kinds of flanges. It can be used in Chemical industry, Food industry, Pharmacy industry, Semiconductor industry, Aerospace industry, Petrochemical industry, Paper industry, Shipbuilding industry and Medical equipments.



II、特性

耐温 从-260℃~+260℃范围内均可安全使用。
耐压力 从真空到207kg/cm² (3000psi)
耐酸碱 (pH值0~14)，抗腐蚀不受一般化学物质影响。
(除熔融碱金属，及气态、液态之氟元素以外)
抗老化 长期存放不变质且无污染。
抗蠕变 容易安装，容易锁紧，施工后不易变形。
符合FDA之标准 (FDA21 CFR177.1550)
是食品和制药工业理想的密封垫片。
优越之填充顺应性，可使用于粗糙或受损之法兰。

II、Technical Properties

Temperature Range: -260℃~+260℃
Operating Pressure: Vacuum to 207kg/cm² (3000psi)
Chemical Resistance: (PH:0~14) except motten alkali metals and elemental fluorine.
Stability: No subject to aging, store indefinitely, and free from contamination.
Cold flow & creep
Easy to install, lock, after construction, it is not easy to deformation.
Safety: Complies to FDA21 CFR177.1550
Ideal sealing gaskets for food and pharmaceutical industries.
Superior compliance used for crude or damaged flanges.

板状膨体聚四氟乙烯密封垫片 Expanded PTFE Sheet & Gasket

测试结果 TEST RESULT

厚度 (Thickness)	0.8mm	2.0mm	
密封 ml/hr (Sealability)	0.06	0.17	ASTM F37B
压缩率 % (Compression Ratio)	63.6	63.4	ASTM F36
还原率 % (Elastic Resilience Ratio)	8.8	9.1	ASTM F36
应力缓和率 % (Stress relaxation Ratio)	16.3	37.1	ASTM F38

测试结是以厚度0.8mm和2.0mm之板，依据ASTM测试方法测得
Test result by Thickness 0.8mm and 2.0mm According to ASTM

密封垫片最大外径: φ1500mm

Sealing Gasket Max OD φ1500mm

通用规格 Specifications

Tmm x Wmm x Lmm

通径 (size)	通径 (size)	通径 (size)
DN10	DN100	DN500
DN25	DN125	DN600
DN20	DN150	DV700
DN25	DN200	DN800
DN32	DN250	DN900
DN40	DN300	DN1000
DN50	DN350	DN1200
DN65	DN400	
DN80	DN450	

0.5x1520x1520	3.0x1520x1520
1.0x1520x1520	4.0x1520x1520
1.5x1520x1520	5.0x1520x1520
2.0x1520x1520	6.0x1500x1500
2.5x1520x1520	7.0x1500x1500

